
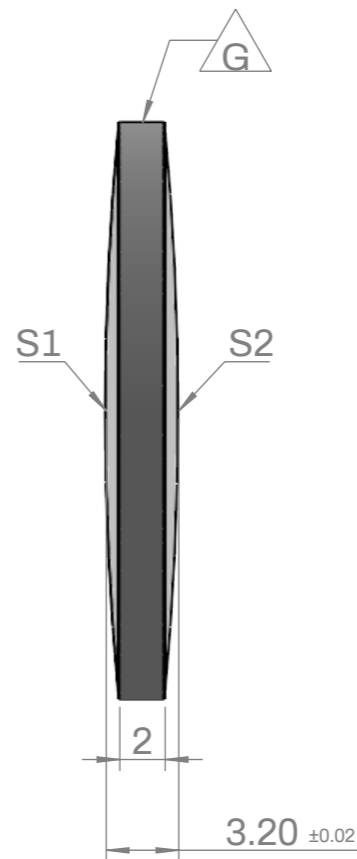
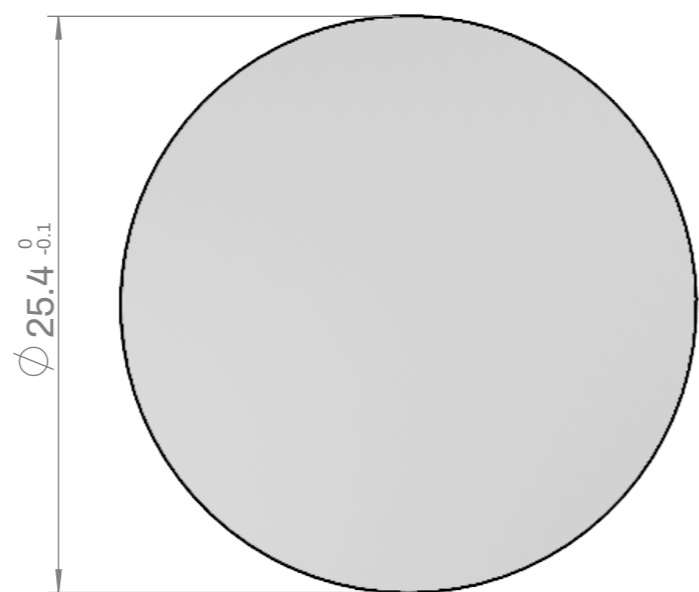
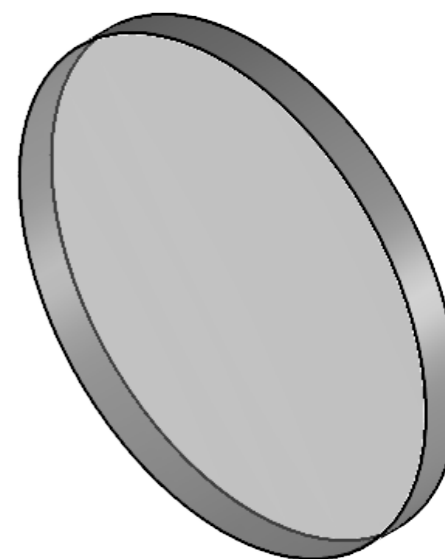


SPECIFICATIONS

- Order number : L1B150U
- Substrate : UV Fused silica
- Design wavelength : 587.6nm
- Focal length (EFL) : 150.0mm ±1%
- Back focal length (BFL) : 148.90mm
- Bevel : Protective bevel as needed
- Grind Surface :  Mark



	S1	S2
Radius	CC 137.04	CC 137.04
Power	3.00 Ring	3.00 Ring
Irregularity	λ/4@633nm	λ/4@633nm
Centering	< 1 arcmin	
Surface Quality	40-20 Scratch-Dig	
Clear Aperture	90%	



DATE	SCALE	TITLE
2023-11-06	1:1	25.4mmØ , FL= 150.0mm, UVFS, BI-convex Lens
3RD ANGLE PROJECTION	UNIT	ORDER NO
	MM	L1B150U