
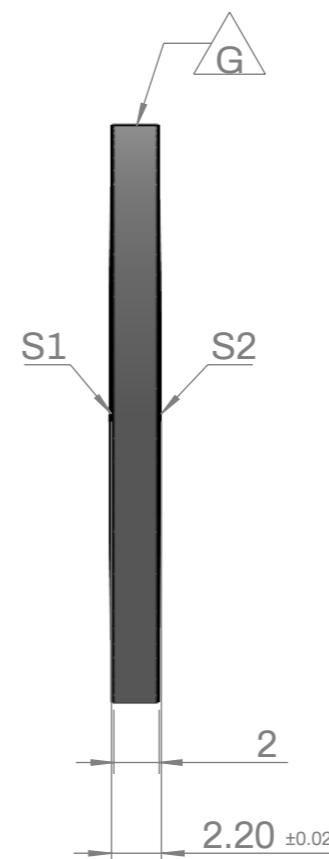
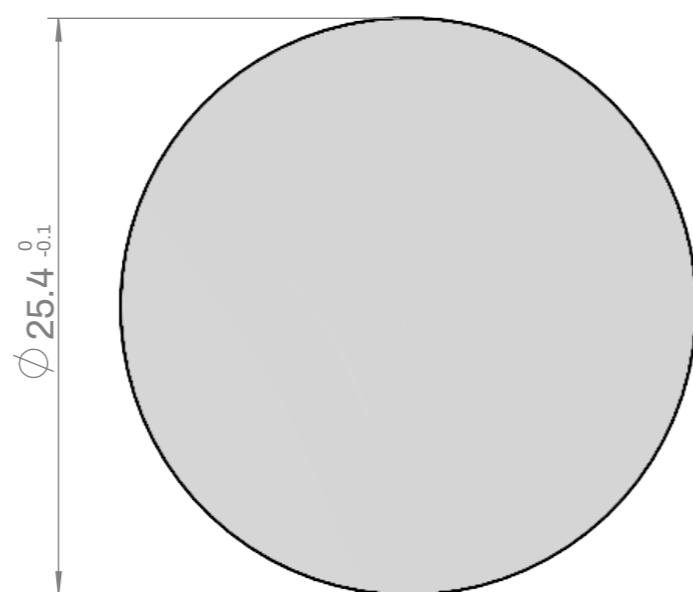
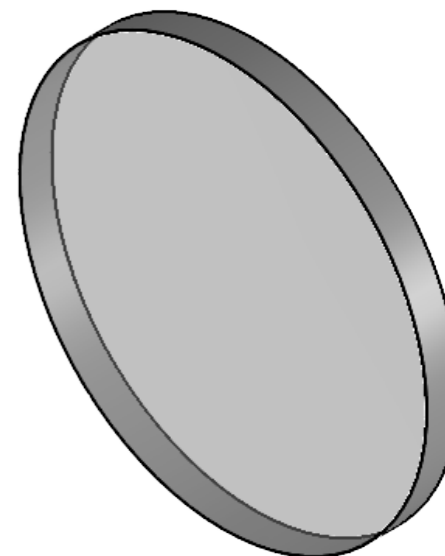


# SPECIFICATIONS

- Order number : L1B1000B
- Substrate : N-BK7
- Design wavelength : 587.6nm
- Focal length (EFL) : 1000.0mm ±1%
- Back focal length (BFL) : 999.27mm
- Bevel : Protective bevel as needed
- Grind Surface :  Mark



|                 | S1                | S2         |
|-----------------|-------------------|------------|
| Radius          | CC 1029.81        | CC 1029.81 |
| Power           | 3.00 Ring         | 3.00 Ring  |
| Irregularity    | λ/4@633nm         | λ/4@633nm  |
| Centering       | < 1 arcmin        |            |
| Surface Quality | 40-20 Scratch-Dig |            |
| Clear Aperture  | 90%               |            |



| DATE  | SCALE | TITLE   |
|---|-------|---|
| 2023-11-06  | 1:1   | 25.4mmØ , FL= 1000.0mm, N-BK7, BI-convex Lens |
| 3RD ANGLE PROJECTION  | UNIT  | ORDER NO                                      |
|  | MM    | L1B1000B                                      |