
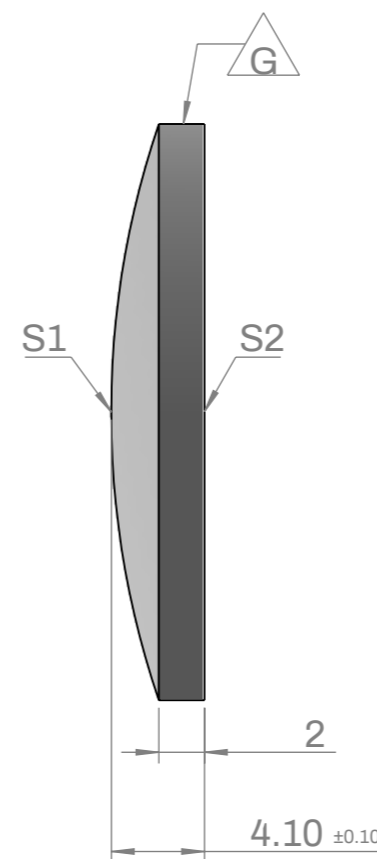
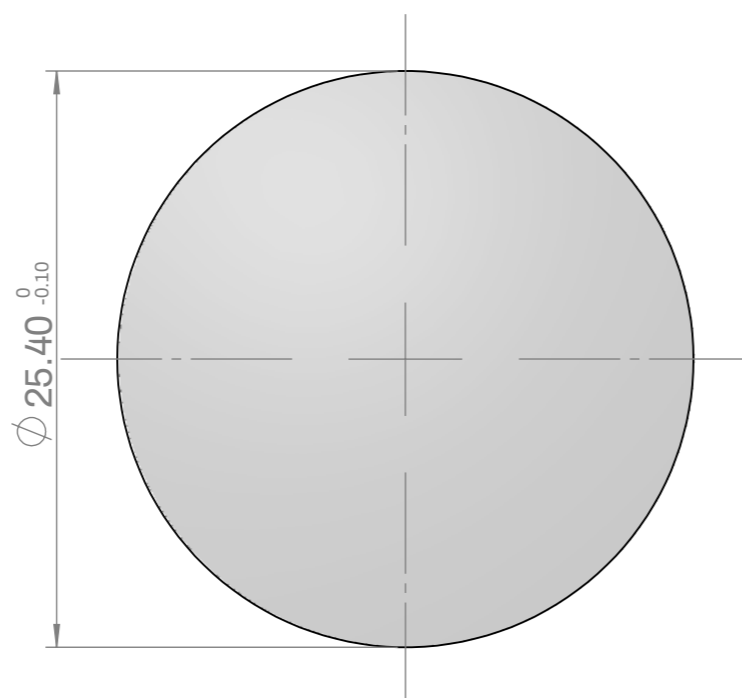
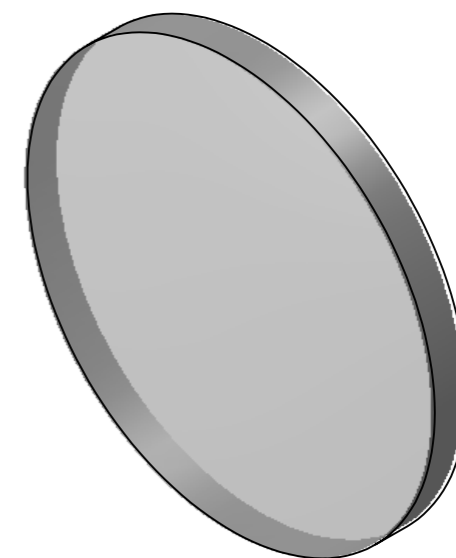


SPECIFICATIONS

- Order number : L1P75B
- Substrate : N-BK7
- Design wavelength : 587.6nm
- Focal length (EFL) : 75.0mm ±1%
- Back focal length (BFL) : 72.29mm
- Chamfer : Protective bevel as needed
- Grind Surface :  Mark



| | S1 | S2 |
|-----------------|--------------------------|--------------------------|
| Radius | CX 38.63 | Infinity |
| Power | 3.00 Ring | - |
| Irregularity | $\lambda/4@633\text{nm}$ | $\lambda/4@633\text{nm}$ |
| Centering | < 1 arcmin | |
| Surface Quality | 40-20 Scratch-Dig | |
| Clear Aperture | 90% | |



| DATE | SCALE | TITLE |
|---|------------|---|
| 2023-11-03 | 1:1 | 25.4mmØ, FL= 75.0mm, N-BK7, Plano-convex Lens |
| 3RD ANGLE PROJECTION  | UNIT MM | ORDER NO L1P75B |