
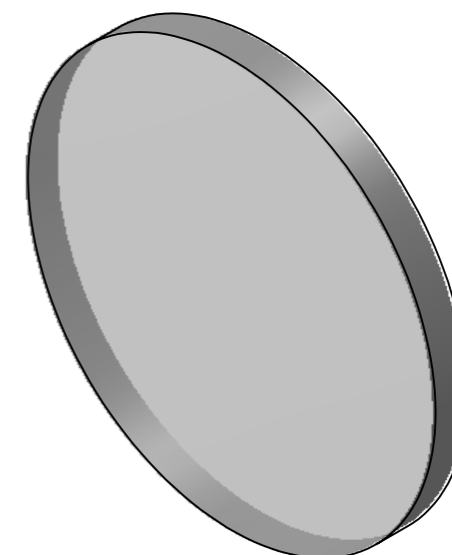
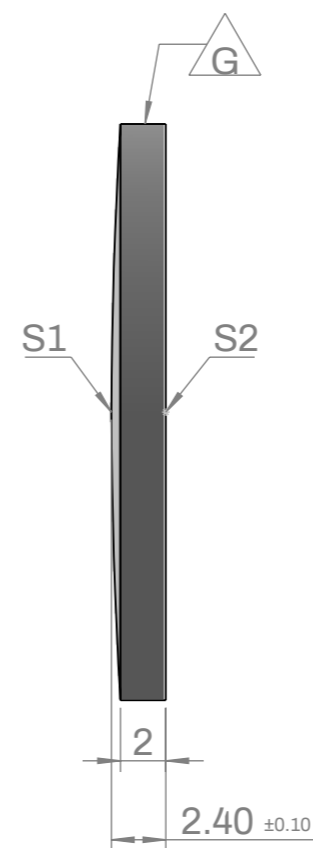
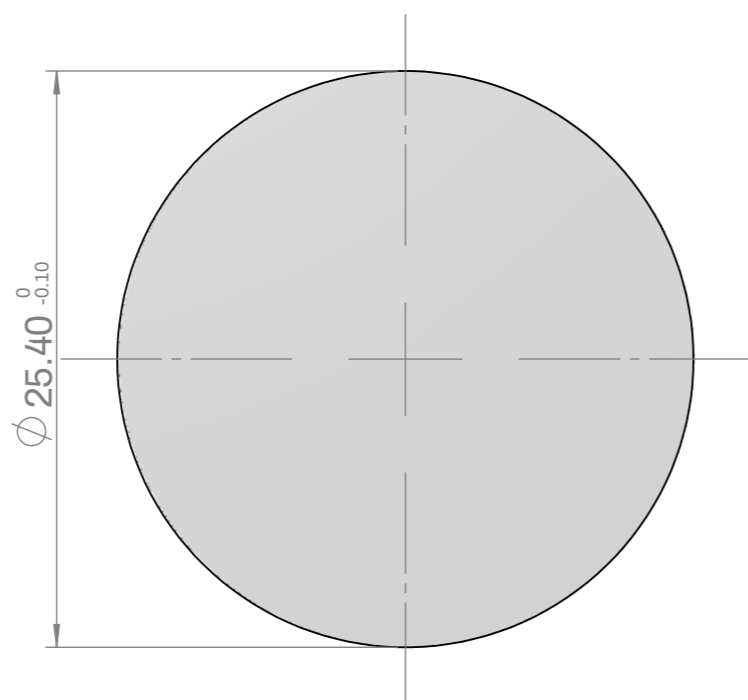


# SPECIFICATIONS

- Order number : L1P500U
- Substrate : UV grade fused silica
- Design wavelength : 587.6nm
- Focal length (EFL) : 500.0mm ±1%
- Back focal length (BFL) : 498.35mm
- Chamfer : Protective bevel as needed
- Grind Surface :  Mark



	S1	S2
Radius	CX 229.25	Infinity
Power	3.00 Ring	3.00 Ring
Irregularity	$\lambda/4@633\text{nm}$	$\lambda/4@633\text{nm}$
Centering	< 1 arcmin	
Surface Quality	40-20 Scratch-Dig	
Clear Aperture	90%	



DATE	SCALE	TITLE
2023-11-03	1:1	25.4mm $\phi$ , FL= 500.0mm, UVFS, Plano-convex Lens
3RD ANGLE PROJECTION 	UNIT MM	ORDER NO  L1P500U