
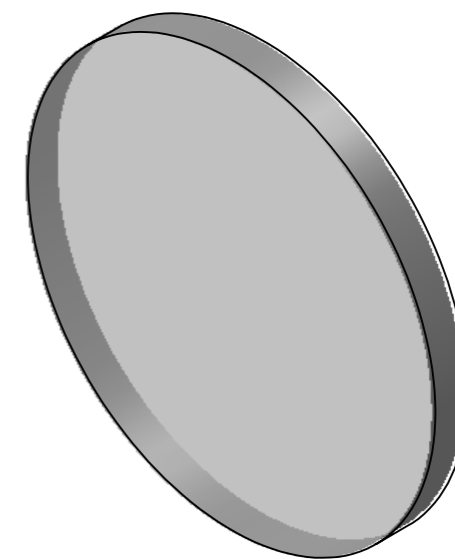
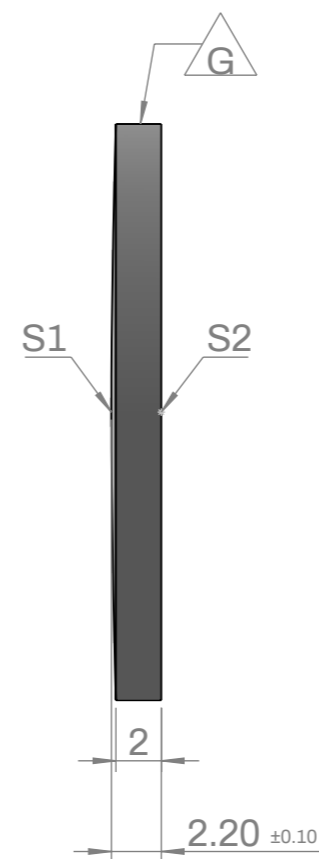
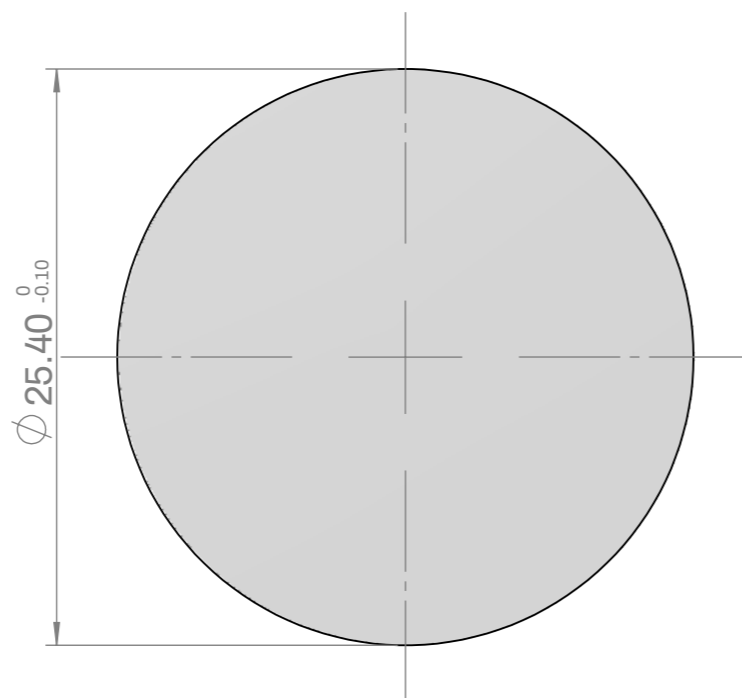


# SPECIFICATIONS

- Order number : L1P1000U
- Substrate : UV grade fused silica
- Design wavelength : 587.6nm
- Focal length (EFL) : 1000.0mm ±1%
- Back focal length (BFL) : 998.49mm
- Chamfer : Protective bevel as needed
- Grind Surface :  Mark



|                 | S1                | S2        |
|-----------------|-------------------|-----------|
| Radius          | CX 458.49         | Infinity  |
| Power           | 3.00 Ring         | 3.00 Ring |
| Irregularity    | λ/4@633nm         | λ/4@633nm |
| Centering       | < 1 arcmin        |           |
| Surface Quality | 40-20 Scratch-Dig |           |
| Clear Aperture  | 90%               |           |



| DATE  | SCALE | TITLE  |
|---|-------|--|
| 2023-11-03  | 1:1   | 25.4mmØ, FL= 1000.0mm, UVFS, Plano-convex Lens |
| 3RD ANGLE PROJECTION  | UNIT  | ORDER NO                                       |
|  | MM    | L1P1000U                                       |